
Ribberør BKK

GoGetNo : 6976

Drawing Specification of Ribberør BKK

- ❖ Family with single view of 3d with Variation Detail
- ❖ Mechanical Equipment family
- ❖ 2 Family types :
 1. B32-83-10
 2. B42-92-10

I. Family Variation

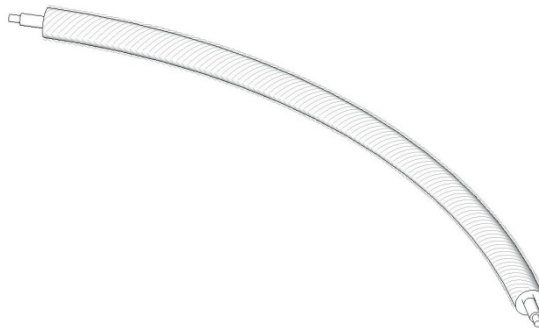
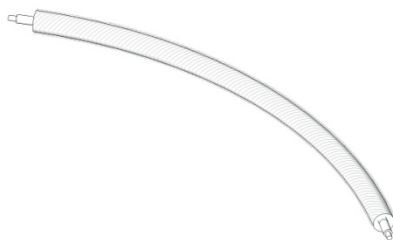
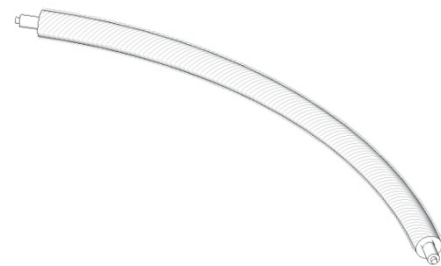


Figure 01
Family Perspectives



Ribberør BKK B32-83-10



Ribberør BKK B42-92-10

Figure 02
Variation of the family front elevation

II. Family Parameter and Code

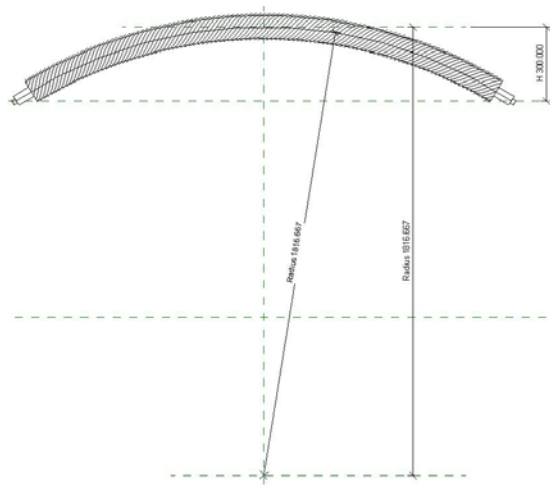


Figure 03
Family Plan Reference



Figure 04
Family Left Reference

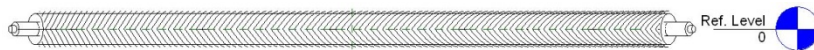


Figure 05
Family Front Reference

Family Types

Name: B32-83-10

Parameter	Value	Formula
Graphics		
1501 Fins	<input checked="" type="checkbox"/>	=
Materials and Finishes		
2003 Tube	RAL 9016	=
2002 Socket	RAL 9016	=
2001 Fin	RAL 9016 F	=
Dimensions		
1403 Length	2116.8	= 2 * 3.14 * R * Alpha / FC
1401 K	2000.0	=
1402 H	300.0	=
1404 Alpha	66.797°	= 2 * acos((R - H) / R)
Identity Data		
1705 URL	http://www.meinertz.com	=
1702 Model	B32-83-10	=
1704 Manufacturer	Meinertz	= "Meinertz"
1701 Keynote	B32-83-10	=
1706 GoGetNo	6976	= 6976
Type Comments		=
Description		=
Assembly Code		=
Cost		=
Energy Analysis		
1201 Thermal Performance	220.151951	= CTP * Length / 1000 mm
Other		
9804 Tube Radius	16.5	=
9803 Socket Radius	10.0	=
9802 Socket Length	1.000°	=
9805 R	1816.7	= ((K ^ 2) / (8 * H) + (H / 2))
9801 Fin Radius	41.5	=
9806 Fin Diameter	83.0	= Fin Radius * 2
9807 FC	360.000°	= 360°
9808 CTP	104	= if(Fin Diameter = 73 mm, 88, if(Fin Diam

Family Types: New..., Rename..., Delete

Parameters: Add..., Modify..., Remove

OK Cancel Apply Help

Figure 06
Parameter Reference