

Ribberør LBF

GoGetNo : 6966

Family Types Preset

1. Type - K33-73-08 LBF

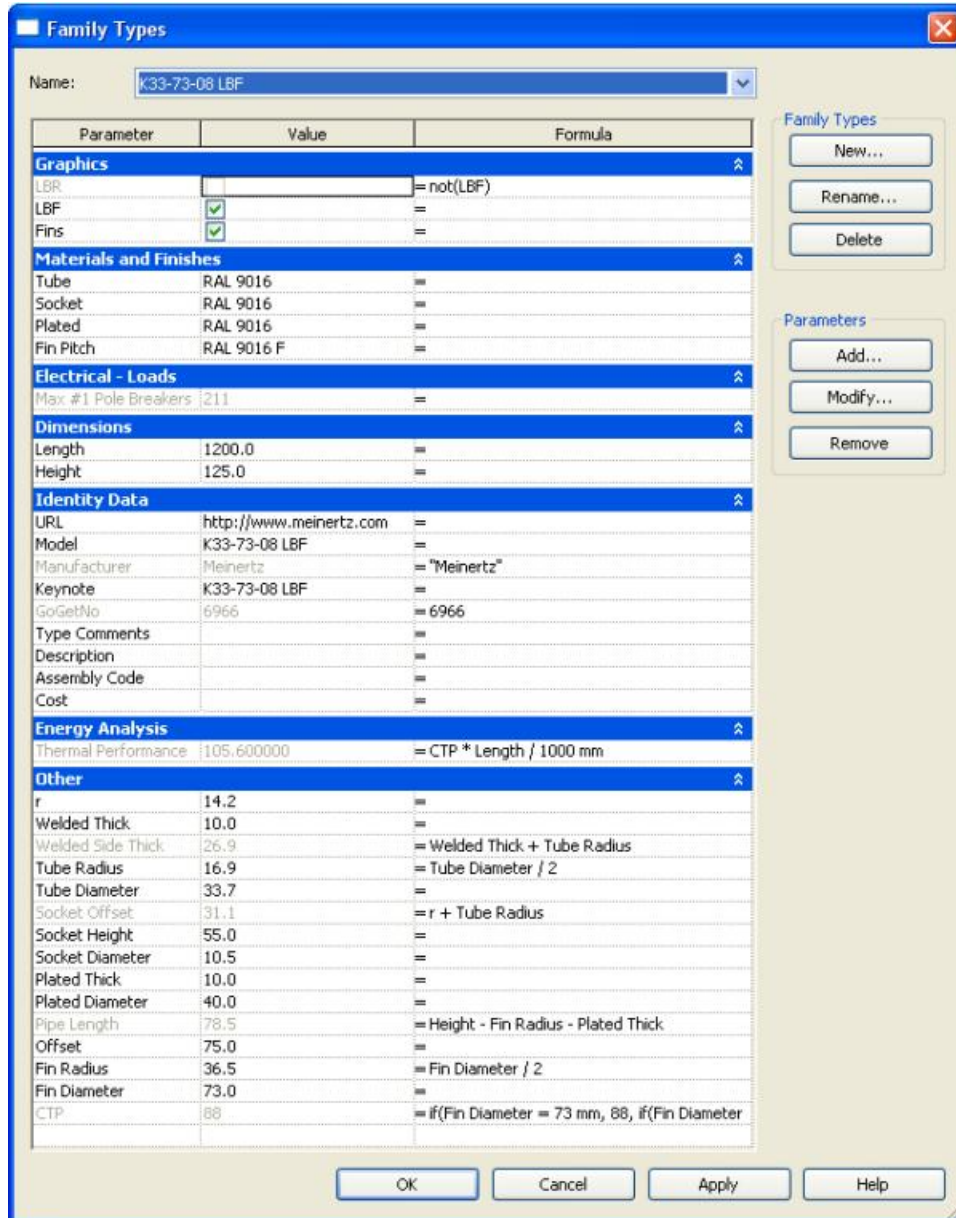


Figure A.01

Type - K33-73-08 LBF
Family Parameter Reference

2. Type - K33-73-08 LBR

Family Types

Name:

Parameter	Value	Formula
Graphics		
LBR	<input checked="" type="checkbox"/>	= not(LBF)
LBF	<input type="checkbox"/>	=
Fins	<input checked="" type="checkbox"/>	=
Materials and Finishes		
Tube	RAL 9016	=
Socket	RAL 9016	=
Plated	RAL 9016	=
Fin Pitch	RAL 9016 F	=
Electrical - Loads		
Max. #1 Pole Breakers	211	=
Dimensions		
Length	1200.0	=
Height	125.0	=
Identity Data		
URL	http://www.meinertz.com	=
Model	K33-73-08 LBR	=
Manufacturer	Meinertz	= "Meinertz"
Keynote	K33-73-08 LBR	=
GoGetNo	6966	= 6966
Type Comments		=
Description		=
Assembly Code		=
Cost		=
Energy Analysis		
Thermal Performance	105.600000	= CTP * Length / 1000 mm
Other		
r	14.2	=
Welded Thick	10.0	=
Welded Side Thick	26.9	= Welded Thick + Tube Radius
Tube Radius	16.9	= Tube Diameter / 2
Tube Diameter	33.7	=
Socket Offset	31.1	= r + Tube Radius
Socket Height	55.0	=
Socket Diameter	10.5	=
Plated Thick	10.0	=
Plated Diameter	40.0	=
Pipe Length	78.5	= Height - Fin Radius - Plated Thick
Offset	75.0	=
Fin Radius	36.5	= Fin Diameter / 2
Fin Diameter	73.0	=
CTP	88	= if(Fin Diameter = 73 mm, 88, if(Fin Diameter

Family Types

New...
Rename...
Delete

Parameters

Add...
Modify...
Remove

OK Cancel Apply Help

Figure A.02

Type - K33-73-08 LBR
Family Parameter Reference

3. Type - K33-83-10 LBF

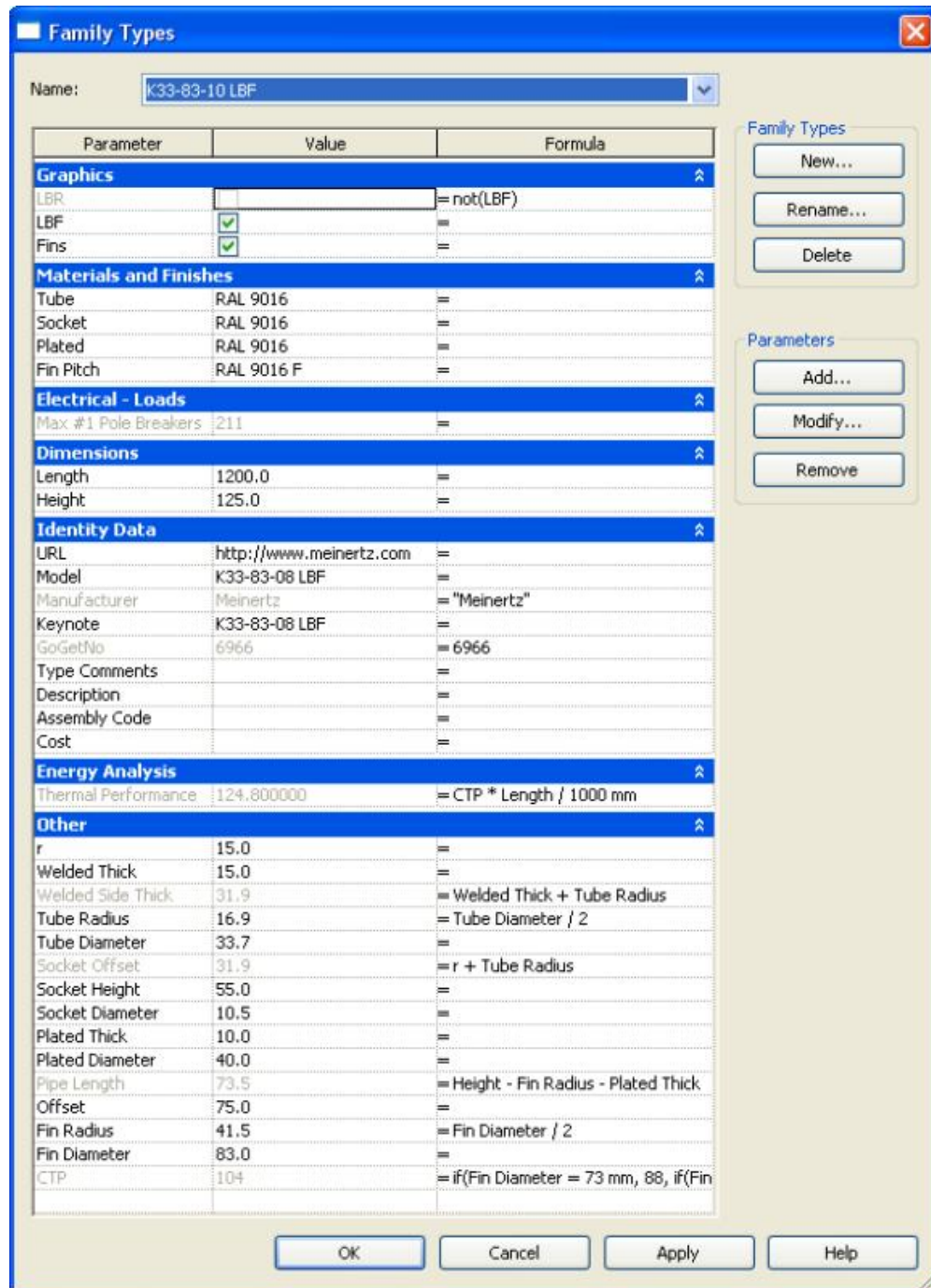


Figure A.03
Type – K33-83-10 LBF
Family Parameter Reference

4. Type - K33-83-10 LBR



Figure A.04
Type - K33-83-10 LBR
Family Parameter Reference

5. Type - K42-92-10 LBF



Figure A.05
Type – K42-92-10 LBF
Family Parameter Reference

6. Type - K42-92-10 LBR

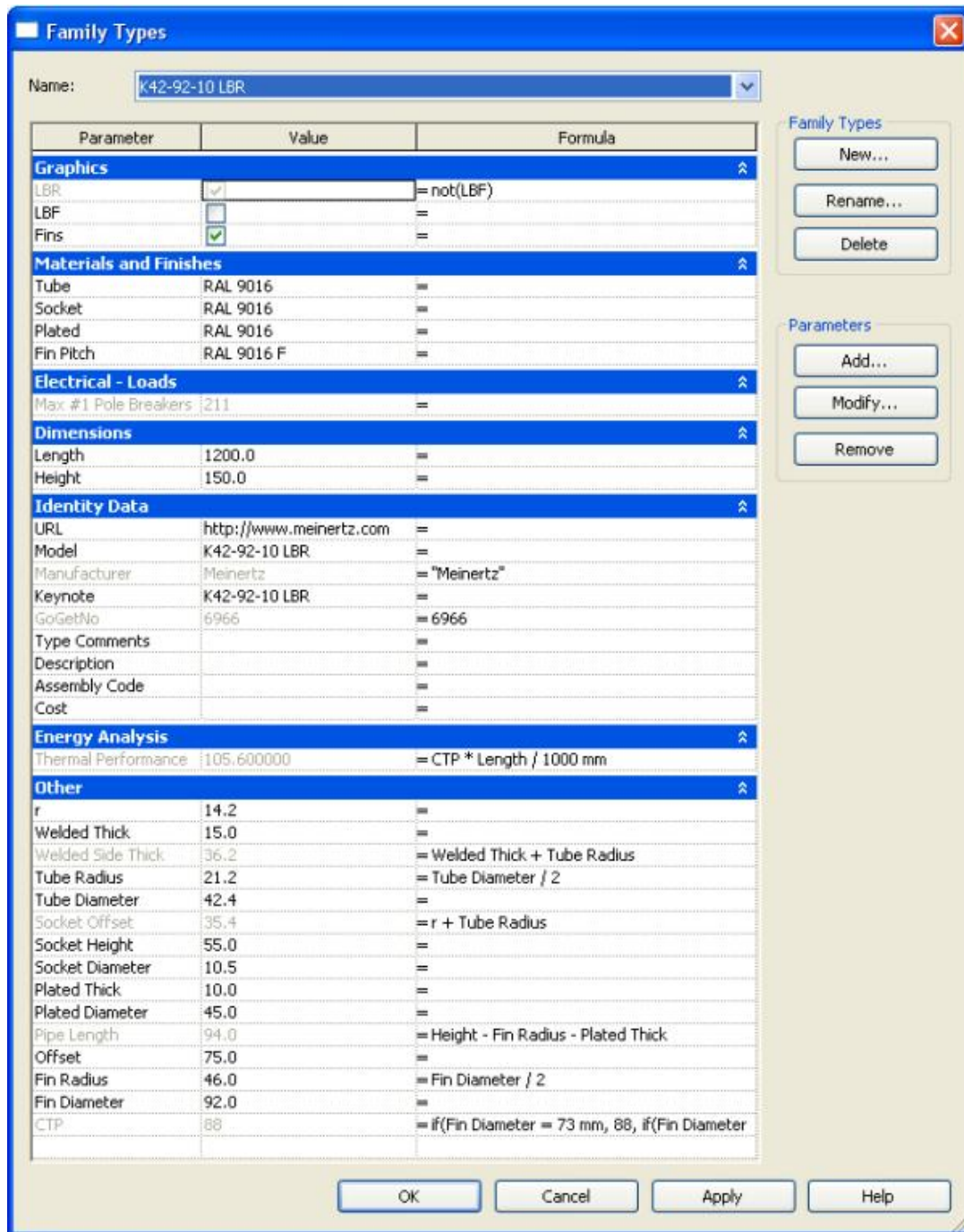


Figure A.06
 Type - K42-92-10 LBR
 Family Parameter Reference

7. Type - K48-98-10 LBF

Family Types

Name:

Parameter	Value	Formula
Graphics		
LBR		= not(LBF)
LBF	<input checked="" type="checkbox"/>	=
Fins	<input checked="" type="checkbox"/>	=
Materials and Finishes		
Tube	RAL 9016	=
Socket	RAL 9016	=
Plated	RAL 9016	=
Fin Pitch	RAL 9016 F	=
Electrical - Loads		
Max. #1 Pole Breakers	211	=
Dimensions		
Length	1200.0	=
Height	150.0	=
Identity Data		
URL	http://www.meinertz.com	=
Model	K48-98-10 LBF	=
Manufacturer	Meinertz	= "Meinertz"
Keynote	K48-98-10 LBF	=
GoGetNo	6966	= 6966
Type Comments		=
Description		=
Assembly Code		=
Cost		=
Energy Analysis		
Thermal Performance	98.400000	= CTP * Length / 1000 mm
Other		
r	14.2	=
Welded Thick	15.0	=
Welded Side Thick	39.2	= Welded Thick + Tube Radius
Tube Radius	24.2	= Tube Diameter / 2
Tube Diameter	48.3	=
Socket Offset	38.4	= r + Tube Radius
Socket Height	65.0	=
Socket Diameter	10.5	=
Plated Thick	10.0	=
Plated Diameter	50.0	=
Pipe Length	91.0	= Height - Fin Radius - Plated Thick
Offset	75.0	=
Fin Radius	49.0	= Fin Diameter / 2
Fin Diameter	98.0	=
CTP	82	= if(Fin Diameter = 73 mm, 88, if(Fin Diameter

Family Types

New...
Rename...
Delete

Parameters

Add...
Modify...
Remove

OK Cancel Apply Help

Figure A.07
Type – K48-98-10 LBF
Family Parameter Reference

8. Type – K48-98-10 LBR



Figure A.08
Type – K48-98-10 LBR
Family Parameter Reference

9. Type - K60-110-10 LBF

Family Types

Name:

Parameter	Value	Formula
Graphics		
LBR		= not(LBF)
LBF	<input checked="" type="checkbox"/>	=
Fins	<input checked="" type="checkbox"/>	=
Materials and Finishes		
Tube	RAL 9016	=
Socket	RAL 9016	=
Plated	RAL 9016	=
Fin Pitch	RAL 9016 F	=
Electrical - Loads		
Max #1 Pole Breakers	211	=
Dimensions		
Length	1200.0	=
Height	150.0	=
Identity Data		
URL	http://www.meinertz.com	=
Model	K60-110-10 LBF	=
Manufacturer	Meinertz	= "Meinertz"
Keynote	K60-110-10 LBF	=
GoGetNo	6966	= 6966
Type Comments		=
Description		=
Assembly Code		=
Cost		=
Energy Analysis		
Thermal Performance	216.000000	= CTP * Length / 1000 mm
Other		
r	15.0	=
Welded Thick	10.0	=
Welded Side Thick	40.2	= Welded Thick + Tube Radius
Tube Radius	30.2	= Tube Diameter / 2
Tube Diameter	60.3	=
Socket Offset	45.2	= r + Tube Radius
Socket Height	65.0	=
Socket Diameter	10.5	=
Plated Thick	10.0	=
Plated Diameter	67.5	=
Pipe Length	85.0	= Height - Fin Radius - Plated Thick
Offset	75.0	=
Fin Radius	55.0	= Fin Diameter / 2
Fin Diameter	110.0	=
CTP	180	= if(Fin Diameter = 73 mm, 88, if(Fin Diameter

Family Types

New...
Rename...
Delete

Parameters

Add...
Modify...
Remove

OK Cancel Apply Help

Figure A.09
Type – K60-110-10 LBF
Family Parameter Reference

10. Type - K60-110-10 LBR

Name:

Parameter	Value	Formula
Graphics		
LBR		= not(LBF)
LBF	<input checked="" type="checkbox"/>	=
Fins	<input checked="" type="checkbox"/>	=
Materials and Finishes		
Tube	RAL 9016	=
Socket	RAL 9016	=
Plated	RAL 9016	=
Fin Pitch	RAL 9016 F	=
Electrical - Loads		
Max. #1 Pole Breakers	211	=
Dimensions		
Length	1200.0	=
Height	150.0	=
Identity Data		
URL	http://www.meinertz.com	=
Model	K60-110-10 LBR	=
Manufacturer	Meinertz	= "Meinertz"
Keynote	K60-110-10 LBR	=
GoGetNo	6966	= 6966
Type Comments		=
Description		=
Assembly Code		=
Cost		=
Energy Analysis		
Thermal Performance	216.000000	= CTP * Length / 1000 mm
Other		
r	15.0	=
Welded Thick	10.0	=
Welded Side Thick	40.2	= Welded Thick + Tube Radius
Tube Radius	30.2	= Tube Diameter / 2
Tube Diameter	60.3	=
Socket Offset	45.2	= r + Tube Radius
Socket Height	65.0	=
Socket Diameter	10.5	=
Plated Thick	10.0	=
Plated Diameter	67.5	=
Pipe Length	85.0	= Height - Fin Radius - Plated Thick
Offset	75.0	=
Fin Radius	55.0	= Fin Diameter / 2
Fin Diameter	110.0	=
CTP	180	= if(Fin Diameter = 73 mm, 88, if(Fin Diameter

Family Types: New..., Rename..., Delete

Parameters: Add..., Modify..., Remove

OK Cancel Apply Help

Figure A.10
 Type - K60-110-10 LBR
 Family Parameter Reference

11. Type - K60-123-12 LBF

Family Types X

Name:

Parameter	Value	Formula
Graphics		
LBR		= not(LBF)
LBF	<input checked="" type="checkbox"/>	=
Fins	<input checked="" type="checkbox"/>	=
Materials and Finishes		
Tube	RAL 9016	=
Socket	RAL 9016	=
Plated	RAL 9016	=
Fin Pitch	RAL 9016 F	=
Electrical - Loads		
Max #1 Pole Breakers	211	=
Dimensions		
Length	1200.0	=
Height	150.0	=
Identity Data		
URL	http://www.meinertz.com	=
Model	K60-123-12 LBF	=
Manufacturer	Meinertz	= "Meinertz"
Keynote	K60-123-12 LBF	=
GoGetNo	6966	= 6966
Type Comments		=
Description		=
Assembly Code		=
Cost		=
Energy Analysis		
Thermal Performance	132.000000	= CTP * Length / 1000 mm
Other		
r	14.2	=
Welded Thick	15.0	=
Welded Side Thick	45.2	= Welded Thick + Tube Radius
Tube Radius	30.2	= Tube Diameter / 2
Tube Diameter	60.3	=
Socket Offset	44.4	= r + Tube Radius
Socket Height	65.0	=
Socket Diameter	10.5	=
Plated Thick	10.0	=
Plated Diameter	67.5	=
Pipe Length	78.5	= Height - Fin Radius - Plated Thick
Offset	75.0	=
Fin Radius	61.5	= Fin Diameter / 2
Fin Diameter	123.0	=
CTP	110	= if(Fin Diameter = 73 mm, 88, if(Fin Diameter

Family Types

New...

Rename...

Delete

Parameters

Add...

Modify...

Remove

OK Cancel Apply Help

Figure A.11
Type – K60-123-12 LBF
Family Parameter Reference

12. Type - K60-123-12 LBR

Family Types X

Name:

Parameter	Value	Formula
Graphics		
LBR		= not(LBF)
LBF	<input checked="" type="checkbox"/>	=
Fins	<input checked="" type="checkbox"/>	=
Materials and Finishes		
Tube	RAL 9016	=
Socket	RAL 9016	=
Plated	RAL 9016	=
Fin Pitch	RAL 9016 F	=
Electrical - Loads		
Max #1 Pole Breakers	211	=
Dimensions		
Length	1200.0	=
Height	150.0	=
Identity Data		
URL	http://www.meinertz.com	=
Model	K60-123-12 LBR	=
Manufacturer	Meinertz	= "Meinertz"
Keynote	K60-123-12 LBR	=
GoGetNo	6966	= 6966
Type Comments		=
Description		=
Assembly Code		=
Cost		=
Energy Analysis		
Thermal Performance	132.000000	= CTP * Length / 1000 mm
Other		
r	14.2	=
Welded Thick	15.0	=
Welded Side Thick	45.2	= Welded Thick + Tube Radius
Tube Radius	30.2	= Tube Diameter / 2
Tube Diameter	60.3	=
Socket Offset	44.4	= r + Tube Radius
Socket Height	65.0	=
Socket Diameter	10.5	=
Plated Thick	10.0	=
Plated Diameter	67.5	=
Pipe Length	78.5	= Height - Fin Radius - Plated Thick
Offset	75.0	=
Fin Radius	61.5	= Fin Diameter / 2
Fin Diameter	123.0	=
CTP	110	= if(Fin Diameter = 73 mm, 88, if(Fin Diameter

Family Types

New...

Rename...

Delete

Parameters

Add...

Modify...

Remove

OK Cancel Apply Help

Figure A.12
 Type - K60-123-12 LBR
 Family Parameter Reference

13. Type - K76-139-12 LBF

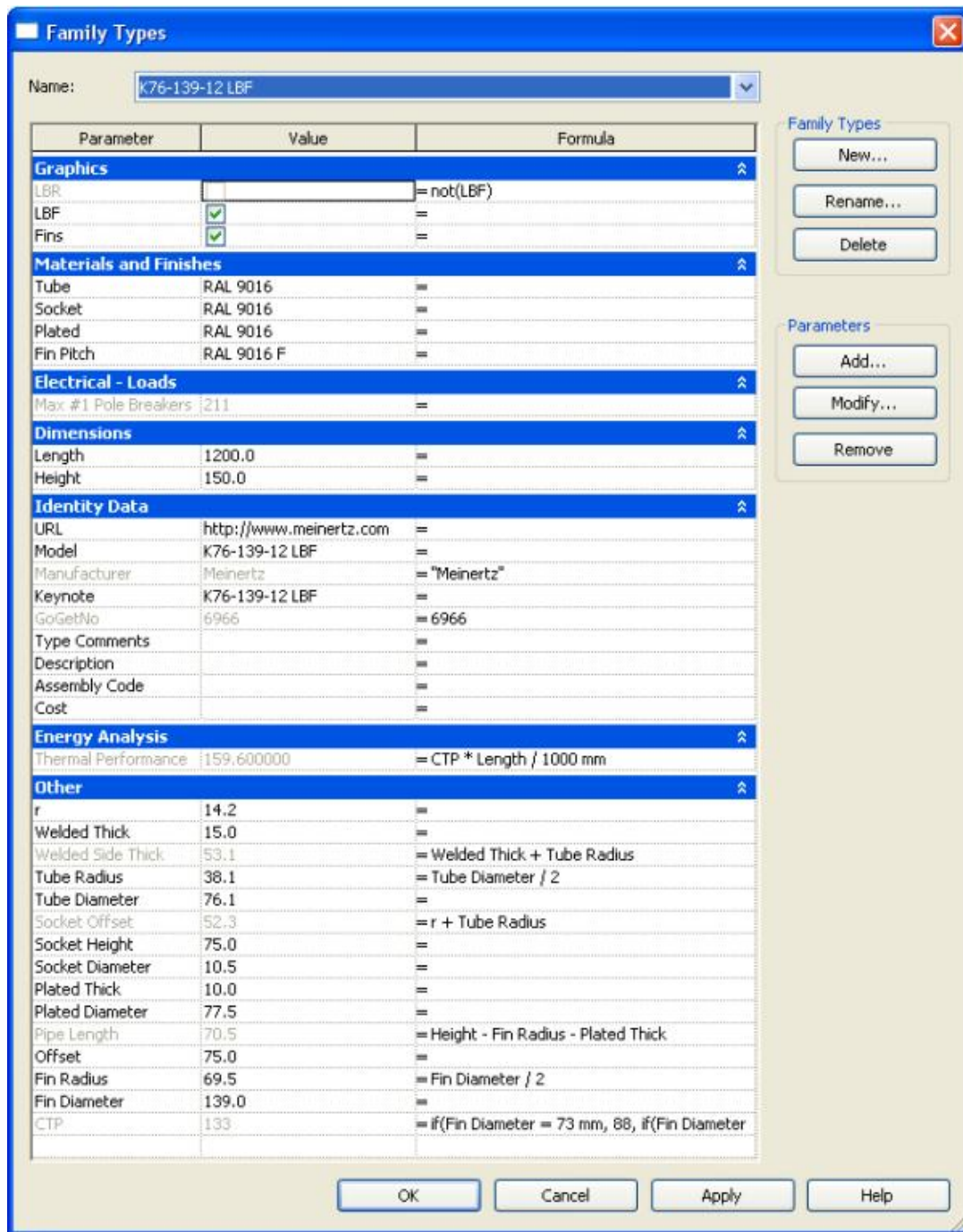


Figure A.13
Type – K76-139-12 LBF
Family Parameter Reference

14. Type - K76-139-12 LBR

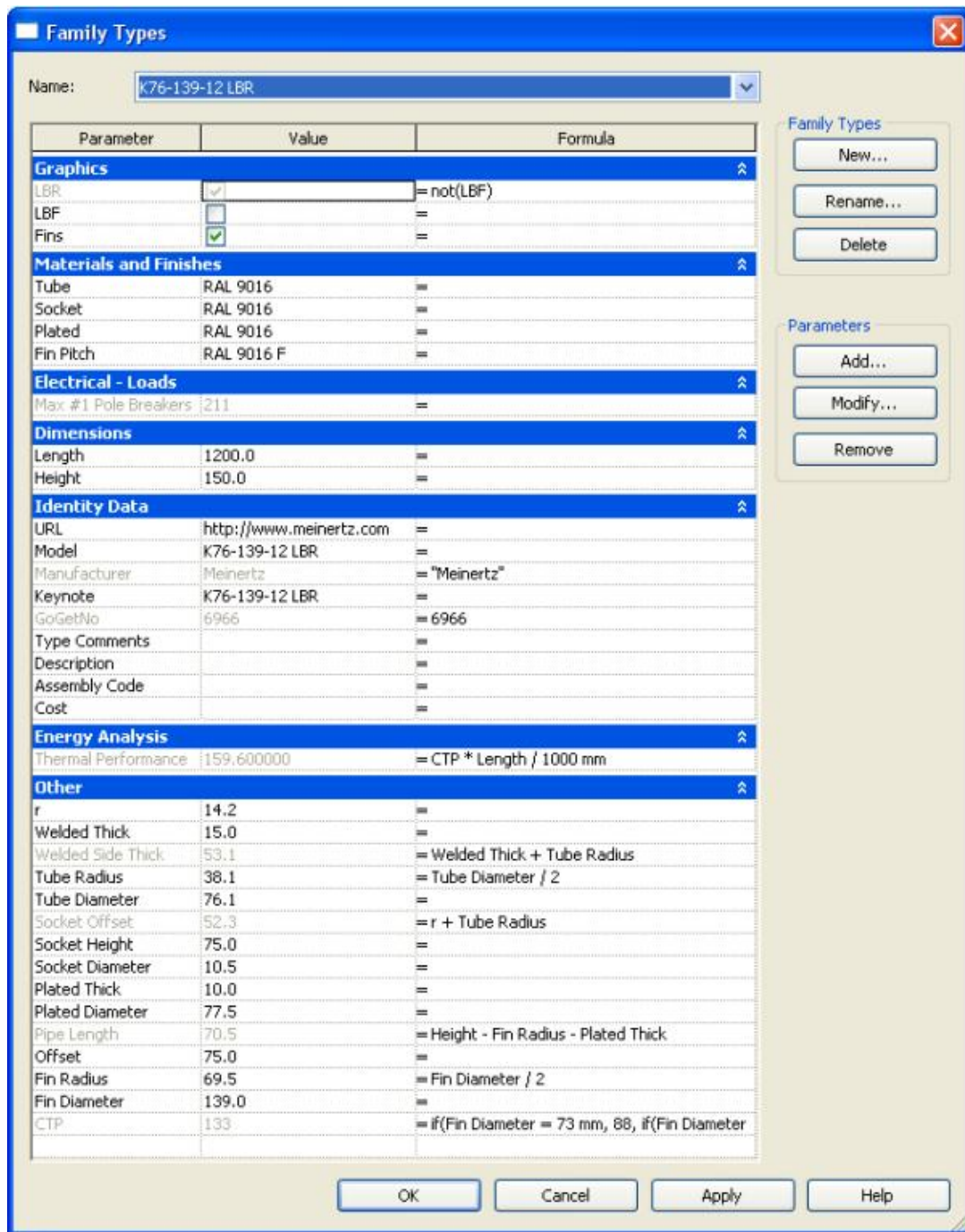


Figure A.14
Type - K76-139-12 LBR
Family Parameter Reference

15. Type - K101-164-12 LBF

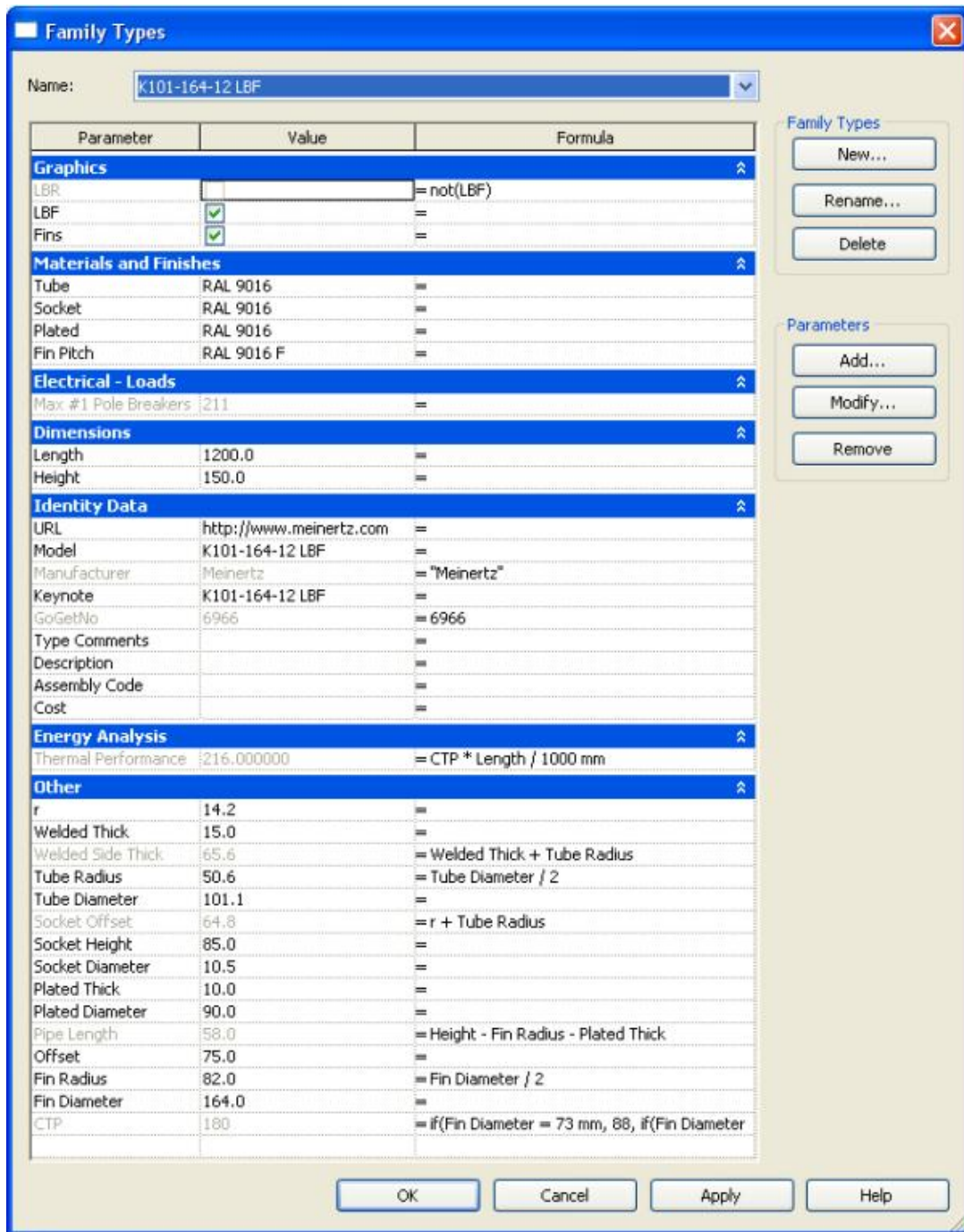


Figure A.15
Type – K101-164-12 LBF
Family Parameter Reference

16. Type – K101-164-12 LBR

Family Types

Name:

Parameter	Value	Formula
Graphics		
LBR	<input checked="" type="checkbox"/>	= not(LBF)
LBF	<input type="checkbox"/>	=
Fins	<input checked="" type="checkbox"/>	=
Materials and Finishes		
Tube	RAL 9016	=
Socket	RAL 9016	=
Plated	RAL 9016	=
Fin Pitch	RAL 9016 F	=
Electrical - Loads		
Max #1 Pole Breakers	211	=
Dimensions		
Length	1200.0	=
Height	150.0	=
Identity Data		
URL	http://www.meinertz.com	=
Model	K101-164-12 LBR	=
Manufacturer	Meinertz	= "Meinertz"
Keynote	K101-164-12 LBR	=
GoGetNo	6966	= 6966
Type Comments		=
Description		=
Assembly Code		=
Cost		=
Energy Analysis		
Thermal Performance	216.000000	= CTP * Length / 1000 mm
Other		
r	14.2	=
Welded Thick	15.0	=
Welded Side Thick	65.6	= Welded Thick + Tube Radius
Tube Radius	50.6	= Tube Diameter / 2
Tube Diameter	101.1	=
Socket Offset	64.8	= r + Tube Radius
Socket Height	85.0	=
Socket Diameter	10.5	=
Plated Thick	10.0	=
Plated Diameter	90.0	=
Pipe Length	58.0	= Height - Fin Radius - Plated Thick
Offset	75.0	=
Fin Radius	82.0	= Fin Diameter / 2
Fin Diameter	164.0	=
CTP	180	= if(Fin Diameter = 73 mm, 88, if(Fin Diameter

Family Types

New...
Rename...
Delete

Parameters

Add...
Modify...
Remove

OK Cancel Apply Help

Figure A.16
Type – K101-164-12 LBR
Family Parameter Reference